

Brunswick Hub News

Being Here For Local Communities

JANUARY 2021

We are open for essential services only.

Unfortunately, we have to close our doors to the general public, however we will continue to support the local community with the following:

Foodbank vouchers

Emergency Chilled Goods foodbank for families

Hearing Aid Batteries

Sydni Centre's Veg bag scheme

Slipper service

To access these services, or to find out more, please
call 01926 422123

(Please note: NHS clinics will continue to run at the Hub unless you are otherwise notified)

Our other services will go to online and telephone support.
This includes the following:

Employment

Health and Wellbeing

Bereavement support

General advice

To get in touch regarding any of our services, contact
01926 422123 (Available weekdays, 10am - 2pm)

Elves, Turkey and Christmas Gifts

On December 16th, we held our annual 'Turkey Batch Day' (this time as a takeaway service) and it was lovely to see so many of you stop by! Some very helpful friends of the Hub showed up to lend a hand to the BHLC team, making sure everyone who showed up got their turkey batch with trimmings, so big thanks to them! We were all in our best Elf attire to raise some money for The Alzheimer's Society and we're pleased to say we managed to total £217 to give to this great cause—Thank you to all that contributed to our fund.

We also spent the last week before we closed for Christmas, wrapping and bagging piles of brilliant presents to give out to families that we have helped with our Emergency chilled foodbank. Thanks to a huge amount of generous donations of toys, books & other gifts, we were able to reach out to a great number of families so thank you so much to everyone that donated, all the gifts were much appreciated!



Free Creative Workshops

Learning Through the Arts will be running three free creative workshops for adults at the Brunswick Centre this February.



- > 9th February, 12 - 2pm: Print a tote bag
- > 16th February, 12 - 2pm: Weave your own placemats & coasters
- > 23rd February, 12 - 2pm: Embroider a decoration for the home

Please get in touch with us at events@learningthroughthearts.co.uk to book your space - Spaces are available on a first come first served basis and booking is essential.

Covid-19 precautions will be in place throughout the session, and we ask that all participants wear a mask and follow the government's guidelines on social distancing.

Bereavement Support



Although we are unable to provide face-to-face Bereavement support at the moment, phone & online support is available for those who have lost a loved one. For more information on how we can help, contact theresataylor@brunswickhlc.org.uk or call us here at Brunswick Hub.

 (Search for us on Facebook)

Foodbank Vouchers

Brunswick Hub is able to issue Foodbank vouchers to those that might be struggling to make ends meet. Give us a call on 01926 422123 to find out more about how to access this service.

For details on where your nearest foodbank is located, visit

warwickdistrict.foodbank.org.uk


 @warwickdistrictfoodbank

Enterprise Employment Programme

If you need help with finding and applying for jobs, we can offer support and advice with this.

We can provide:

- Help with CVs and covering letters
- Benefits advice
- Support with applications
- Interview tips

For more information, contact rachelcefai@brunswickhlc.org.uk or call us here at Brunswick Hub.  @BrunswickHubEC

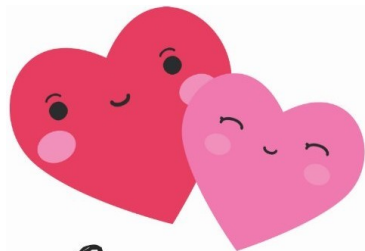
Hearing Aid Batteries

We are still at the Hub and able to issue Hearing Aid Batteries to those who have an NHS card or book. If you have registered with us since Aug 2020, please contact us on [01926 422123](tel:01926422123) prior to your visit and we can arrange for you to collect your batteries at the door. If you are shielding/self isolating, give us a call and we may be able to get your batteries to you.

Those not previously registered will need to bring their card/book and fill in a registration form.

From all of us here at the Hub, we'd like to wish you well as we head into a New Year.

We hope you are keeping well and staying safe in these times.



Stay safe

Brunswick Hub have a chilled foodbank scheme to support families in crisis

There is a £5 charge but you will receive around £20 of basic foods



There's always milk, bread, cheese, ham, margarine, eggs, frozen chicken and frozen mince, and depending on availability there may be some extras as well

We can substitute items if they do not meet your dietary requirements.

Please call 01926 422123 to chat to one of our team about your order

The Sydni centre run a food co-op where you can purchase a fruit and veg bag, eggs and homemade soup.

There's always potatoes, carrots and onions then at least two other veg and two fruit, depending on what's available at the market—an example of the items in the bag is shown below



You can order (by Tuesday lunchtime) and collect (on Thursday PM) through us at Brunswick Hub

Large veg bag—£5

Small veg bag—£3.50

6 Free range eggs—£1

Soup (per portion) - £2

Please call 01926 422123 to order



Opening Hours: 10.00-14.00 (Mon-Fri)

How to get in touch with us here at the Hub:



98-100 Shrubland Street, Leamington Spa, CV31



01926 422123



@Brunswickhlc



@BrunswickHub



www.BHLC.services



@brunswickhub.bhlc